

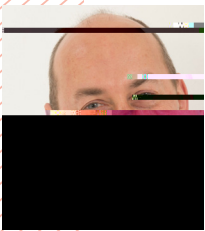
Employer Advisory Group Membership



Emma Jones

Founder

Hollie is a passionate advocate for digital skills and apprenticeships. She is an award-winning TEDx speaker, author and director of two digital companies - Purple Frog Systems and FraggieWorks. She is also the National Policy Skills Champion for the Federation of Businesses (FSB). Having originally read business studies at university, Hollie completed a Level 5 apprenticeship some 25 years later in her own organisation, using it as an opportunity to upskill her existing knowledge. As well as employing apprentices, she now has first-hand experience of the apprenticeship system.



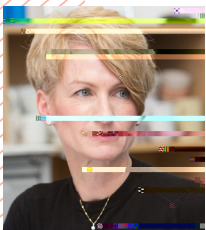
Ian Browne

I lead early careers, school engagement and levy sharing services for LBG connecting with over 25,000 young people each academic year




Irene Graham

Irene is the founding CEO and a board director of the ScaleUp Institute, a private sector, not-for-profit company focused on making the UK the best place in the world to scale up a business. She is a former senior banker at Standard Chartered where she held both European and global managing director roles. She set up, ran and scaled several of the bank's key client and product businesses across its corporate and institutional bank and led several global M&A activities. Working internationally across Europe, the Americas, Middle East and Asia, living in Singapore for a period of time. During the height of the financial crisis was seconded to work across the banking industry where she led the Business Finance Taskforce and Better Business Finance which was responsible for, amongst other initiatives, the founding of the Business Growth Fund, SME Finance Monitor, and leading on developments in Open Banking, and the Small Business Act. She is a Visiting Professor of Entrepreneurship at Strathclyde University and holds a variety of non-executive director and advisory roles across the creative, business and finance communities. This has included participating in the Fintech Strategy review; the Life Sciences Scaleup Taskforce; Creative Industry Councils and sitting on Canada's National Research Industrial Advisory Council.



Jane joined the BCC in 2017 to lead on business environment and skills policy for the UK network of 53 Accredited Chambers of Commerce and the 50,000 businesses they represent. She is passionate about shaping an education and skills system that supports young people to develop skills for great careers and that helps employers to train and develop their workforce. She leads on labour market policy, bringing employers and policy makers together on employment issues, including flexible and equitable workplaces. Jane joined the BCC from the Staffordshire Chambers of Commerce where, as Deputy Chief Executive, she led on regeneration, planning and infrastructure policy. During her career, Jane has led the delivery of a wide range of business support programmes helping thousands of firms of all sizes and sectors.



Samantha is responsible for the delivery of the overall recruitment strategy and contributing to the wider HR strategy in the UK. She takes on leadership for the recruitment team (which includes early talent and school outreach programmes) providing support, guidance and mentoring to a team of talent acquisition and development professionals. She also has responsibility for developing and delivering best practice throughout the entire recruitment process ensuring that the firm recruits and retains the very best talent within the business. Samantha works closely with senior stakeholders to understand their business plans and resourcing requirements. Samantha is passionate about employability and dedicates much of her time to early talent and school outreach strategies, designing and developing apprenticeship programmes, supporting graduate and school employability initiatives. Samantha has been an Enterprise Advisor for a



BP

Tom joined bp in early 2021 and focuses on the external skills agenda and partnerships